

Giuseppe Verdi

Ernani

CONDUCTOR

Marco Armiliato

PRODUCTION

Pier Luigi Samaritani

STAGED BY

Peter McClintock

SET DESIGNER

Pier Luigi Samaritani

COSTUME DESIGNER

Peter J. Hall

LIGHTING DESIGNER

Gil Wechsler

GENERAL MANAGER

Peter Gelb

MUSIC DIRECTOR

James Levine

PRINCIPAL CONDUCTOR

Fabio Luisi

Opera in four acts

Libretto by Francesco Maria Piave, based on the play *Hernani* by Victor Hugo

Saturday, February 25, 2012, 1:00–4:30 pm

Last time this season

The production of *Ernani* was made possible by a generous gift from the **Gramma Fisher Foundation, Marshalltown, Iowa.**

The revival of this production was made possible by a gift from the Metropolitan Opera Club.

The Metropolitan Opera

2011–12 Season

The 94th Metropolitan Opera performance of

Giuseppe Verdi's

Ernani

This performance is being broadcast live over The Toll Brothers–Metropolitan Opera International Radio Network, sponsored by Toll Brothers, America's luxury homebuilder®, with generous long-term support from The Annenberg Foundation, the Vincent A. Stabile Endowment for Broadcast Media, and contributions from listeners worldwide.

This performance is also being broadcast live on Metropolitan Opera Radio on SiriusXM channel 74.

Conductor
Marco Armiliato

IN ORDER OF VOCAL APPEARANCE

Ernani, a bandit
Marcello Giordani

Elvira, Silva's niece and betrothed
Angela Meade

Don Carlo, king of Spain
Dmitri Hvorostovsky

Giovanna, Elvira's duenna
Mary Ann McCormick

Don Ruy Gómez de Silva, a Spanish grandee
Ferruccio Furlanetto

Jago, Silva's squire
Jeremy Galyon

Don Riccardo, the king's squire
Adam Laurence Herskowitz

Saturday, February 25, 2012, 1:00–4:30 pm

This afternoon's performance is being transmitted live in high definition to movie theaters worldwide.

The Met: Live in HD series is made possible by a generous grant from its founding sponsor, the **Neubauer Family Foundation**.

Bloomberg is the global corporate sponsor of *The Met: Live in HD*.



Mary Sells/Metropolitan Opera

A scene from Verdi's *Ernani* with Marcello Giordani (center) in the title role

Chorus Master **Donald Palumbo**
Musical Preparation **Dennis Giauque, Jane Klaviter,**
Steven Eldredge, and Joseph Colaneri

Assistant Stage Director **Eric Einhorn**
Stage Band Conductor **Jeffrey Goldberg**

Prompter **Jane Klaviter**
Italian Coach **Gildo Di Nunzio**

Scenery, properties, and electrical props constructed and painted in **Metropolitan Opera Shops**

Costumes executed by **Metropolitan Opera Costume Department**

Wigs by **Metropolitan Opera Wig Department**

Ernani is performed in the Casa Ricordi–University of Chicago Press Critical Edition edited by C. Gallico, by arrangement with Hendon Music, Inc., a Boosey & Hawkes company, Sole Agent in the US, Canada, and Mexico for Casa Ricordi/Universal Music Publishing Ricordi S.R.L. The critical edition was made possible through the generosity of Brena D. and Lee A. Freeman and through grants from the National Endowment for the Humanities.

This performance is made possible in part by public funds from the New York State Council on the Arts.

Before the performance begins, please switch off cell phones and other electronic devices.

Yamaha is the official piano of the Metropolitan Opera.

Latecomers will not be admitted during the performance.

Visit metopera.org

Met Titles

To activate, press the red button to the right of the screen in front of your seat and follow the instructions provided. To turn off the display, press the red button once again. If you have questions please ask an usher at intermission.

Synopsis

Spain, 1519

Act I

SCENE 1 In the mountains of Aragon

SCENE 2 Elvira's apartments in Silva's castle

Intermission (AT APPROXIMATELY 1:55 PM)

Act II

Silva's castle

Intermission (AT APPROXIMATELY 3 :10 PM)

Act III

Aachen, Germany

Pause

Act IV

Ernani's castle in Saragossa, Spain

Act I: The Bandit

Don Juan of Aragon has lost his title and wealth during a civil war. Taking the name Ernani, he leads a band of outlaws in the mountains. He tells his men of his love for Elvira and his daring plan to rescue her from an impending forced marriage to her uncle, Don Ruy Gómez de Silva. The men, eager for action, set out with Ernani for Silva's castle.

As Elvira waits for Ernani in her room, she is visited by Don Carlo, the king of Spain. He declares his love but then tries to abduct her, and she grabs a knife in self-defense. Ernani bursts in. The king recognizes him as the notorious outlaw and taunts him with insults. The men are about to duel when Silva comes into the room. He is shocked to discover Elvira with two strangers and threatens them both. When a messenger reveals the king's true identity, Silva asks for forgiveness, which Carlo grants. He needs Silva's support in the election for the new Holy Roman Emperor. The king dismisses Ernani, who is angry but leaves at Elvira's urging, vowing revenge.

Act II: The Guest

In Silva's castle, preparations are underway for the marriage of Elvira and Silva. Ernani arrives, disguised as a pilgrim. When Elvira enters in her bridal dress,

Ernani throws off his cloak and offers his head—which has a price on it—as a wedding gift. Elvira, briefly left alone with her lover, assures him that she would rather kill herself than marry someone else. When Silva returns, he is furious to find the couple embracing. But at the arrival of the king, Silva hides Ernani so that he can take revenge on the outlaw later. Carlo accuses Silva of concealing a criminal, but the old man refuses to turn Ernani in and offers his own life as forfeit. When Elvira enters to ask the king for mercy, he takes her away as a hostage. Silva challenges Ernani to a duel and is astonished when Ernani reveals that Carlo is also a suitor for Elvira’s hand. The two agree to suspend their quarrel to take vengeance against the king. Once they have done so, Ernani says, his life will be in Silva’s hands. As a pledge, Ernani gives Silva a hunting horn: when it is sounded, Ernani will kill himself. Silva agrees and calls his men in pursuit of Carlo.

Act III: Clemency

At Charlemagne’s tomb in Aachen, Carlo is waiting for the electors’ choice of the next Holy Roman Emperor. He thinks about the futility of wealth and power and vows to rule wisely if chosen. As a group of conspirators led by Ernani and Silva gathers to plan his assassination, he hides inside the tomb. Ernani is chosen as the one to kill the king, and the men look forward to a better future for Spain. When cannon shots announce that Carlo has been elected emperor, he emerges from his hiding place and orders the conspirators to be punished. The nobles are to be executed, the commoners imprisoned. Ernani reveals his true identity and demands to share the fate of the other noblemen. Elvira again pleads for his life. Addressing himself to the spirit of Charlemagne, the new emperor pardons the conspirators and agrees to the marriage of Ernani and Elvira.

Act IV: The Mask

At his palace in Saragossa, Ernani is celebrating his upcoming marriage to Elvira. A horn sounds in the distance, interrupting a brief moment alone for the happy couple. The horn announces Silva, who enters demanding that Ernani fulfill his oath. Sending the terrified Elvira away, Ernani confronts his rival and pleads for a moment of happiness at the end of his miserable life. Elvira returns as Silva hands Ernani a knife and demands the life that has been promised to him.

Giuseppe Verdi

Ernani

Premiere: La Fenice, Venice, 1844

This dynamic opera is a prime example of the melodic and dramatic vigor that made the reputation of the young Giuseppe Verdi. *Ernani* is based on a scandalous drama by Victor Hugo, its title character an outlaw with a greater sense of honor than the many nobles and royals around him. The story is loaded with outlandish situations and unlikely coincidence. In lieu of the traditional love triangle, this drama presents a young woman contending with three would-be lovers: Ernani, a magisterial nobleman, and another even nobler man, the king of Spain, who later becomes Holy Roman Emperor. This extreme, anti-realistic tale encouraged Verdi to create a score of relentless urgency that whipped contemporary audiences into a collective frenzy. After its initial triumph, *Ernani*, like other early Verdi successes such as *Nabucco*, was overshadowed by the composer's later masterpieces. Recently, audiences have learned to cherish these earlier operas for their own unique qualities and rediscover their vitality.

The Creators

Giuseppe Verdi (1813–1901) was born in the province of Parma near the town of Busseto and composed 28 operas in a career spanning six decades. *Ernani* was his fifth stage work and the third in a series of huge successes beginning with *Nabucco*. *Ernani* marks Verdi's first collaboration with librettist Francesco Maria Piave (1810–1876), who would go on to pen the text for some of his later masterworks, including *La Traviata* and *Rigoletto*. In 1842 Piave became performance director at Venice's Fenice Theater, and while critics generally expressed a less than favorable view of his poetic talents, there is no question that his theatrical instincts inspired some of Verdi's best work. The libretto is based on the play *Hernani* (1830) by Victor Hugo (1802–1885), the French dramatist, political figure, theorist, and author of *Les Misérables* and *The Hunchback of Notre-Dame*.

The Setting

Ernani is set in 16th-century Spain, with a quick excursion (in Act III) to Aachen in Germany. Such a change of setting within an opera or play was contrary to classical notions of unity, but a favorite technique of dramatists in the Romantic Era to depict a disordered world where extreme emotions were the norm.

The Music

The score of *Ernani* makes ample use of two musical devices that would mark Verdi's long career: galloping rhythm and long outpourings of melody. The rhythmic exuberance grows throughout the opera and reaches its peak in the short final act. The stately and dynamic moods in the opera are frequently contrasted with each other, such as in the tenor's opening arias—the first elegant and beautiful, the second rollicking and heroic. The soprano introduces herself with the famous "Ernani, involami." It features trills and runs like other early 19th-century arias, but this piece is anchored in difficult low notes that add dramatic heft. The orchestra generally provides rhythmic propulsion rather than symphonic detail, though touches of solo instruments often highlight the vocal line, as the bass clarinet, clarinets, and bassoons do in the introduction to the baritone's ravishing Act III aria. The chorus is used sparingly but effectively, most notably in the Act III "Se ridesti il Leon," one of the rousing, patriotic numbers that helped make Verdi an Italian icon. The chorus figures in what may be the most impressive scene of the opera: the ensemble at the end of the third act. The tenor, soprano, and chorus surround the baritone voice in rolling cascades of lyricism. It is an enthralling example of Italian opera at its best.

Ernani at the Met

Ernani was first performed at the Met in 1903 with a cast led by Marcella Sembrich, Emilio De Marchi, Antonio Scotti, and Edouard de Reszke. The production fell out of the repertory after four performances. A new production in 1921, with sets designed by Joseph Urban, fared better with audiences, with Gennaro Papi conducting Giovanni Martinelli and the sensational American soprano Rosa Ponselle. Ponselle and Martinelli repeated their success 17 times together throughout the 1920s, but the opera left the repertory again at the end of the decade. A new production in 1956, coinciding with a general mid-century rediscovery of Verdi's earlier works, did much to bring the work into the mainstream once more: Dimitri Mitropoulos conducted a wonderful cast headed by Mario Del Monaco, Zinka Milanov, Leonard Warren, and Cesare Siepi. The comprimario tenor role of Don Riccardo was sung by James McCracken seven years before his arrival at the Met as a leading tenor. The production was revived in 1962 with Thomas Schippers conducting Franco Corelli, Leontyne Price, Cornell MacNeil, and Jerome Hines. Another revival opened the 1970 season, with Schippers conducting Carlo Bergonzi, Martina Arroyo, Sherrill Milnes, and Ruggero Raimondi in his Met debut. James Levine led the later new production of *Ernani* at its 1983 premiere, which was also telecast, with Milnes and Raimondi repeating their roles and the leads sung by Luciano Pavarotti and Leona Mitchell. It was most recently revived in the 2007–08 season.

KEN HOWARD/METROPOLITAN OPERA

The Metropolitan
Opera

2011-12 SEASON

Deborah Voigt and Jay Hunter Morris
in *Götterdämmerung*

The Metropolitan Opera is pleased
to salute Bloomberg in recognition
of its generous support during the
2011-12 season.

Bloomberg

Program Note

With *Ernani*, the fifth of his 28 operas, Verdi was able to exercise a degree of control over the creative process that had been unprecedented thus far in his career. Not only did he enjoy one of the key successes of his early years as a result, but the experience also helped clarify his sense of the untapped potential for a powerful new style of music drama hidden behind the conventions of Italian opera.

Embarking on his first commission for the Teatro la Fenice in Venice—all of his preceding four operas had been premiered at La Scala's larger house in Milan—Verdi changed his mind several times about the subject for the new work. Among those he toyed with were the figures of the medieval tribune Rienzi and Oliver Cromwell (the latter using a plot likely cribbed from a Walter Scott novel), Byron's *The Two Foscari* (which would become the source for his sixth opera), and even *King Lear*. At last, in the fall of 1843, Verdi found himself fixated on Victor Hugo's landmark drama *Hernani, ou l'Honneur Castillan*. He immediately honed in on the pivotal scenes he intuited should be condensed from the lengthy play. "Here is proof that Verdi's highly synthetic imagination concentrated above all else on the linking of a number of fundamental situations," writes opera historian Gilles de Van.

Detailed instructions to Verdi's librettist as to how to parse the drama into musical units signaled the increasingly interventionist role the composer was claiming as a creative necessity. Meanwhile, Verdi had aggressively negotiated a contract with La Fenice's management that gave him full responsibility for the libretto, even securing the right to choose singers himself from among those scheduled to appear with the company that season. "Verdi's desire to take charge of every aspect of an opera," according to de Van, "implied that he had the power to decide what weight to give the text and the music, respectively, depending on the 'moments' of the action."

The librettist in this instance was Francesco Maria Piave (1810–1876), a former seminarian from a Venetian family, with whom Verdi had agreed to collaborate for the first time. Though a few years older than the composer, the poet was essentially unknown and had precious little theatrical experience. But Verdi turned this to his advantage, treating his colleague as a sounding board for his own ideas about how to maximize dramatic effectiveness. As the domineering partner, Verdi even had Piave set aside the Cromwell libretto they had previously agreed on so as to start afresh with the *Ernani* project.

Correspondence between composer and poet laid out some fundamental aesthetic rules as guideposts for the style of opera Verdi was evolving: above all, these rules placed a premium on brevity and compression. When Piave indirectly voiced complaints to another friend over the many sudden changes of structure and detail the composer demanded, Verdi explained that he was simply drawing on his experience as an avid theatergoer who pays careful attention to what

the public wants. “I’ve been able to put my finger on so many works which wouldn’t have failed if the pieces had been better laid out, the effects better calculated, the musical forms clearer, etc.,” declared Verdi. However vexatious Piave may have found their collaboration, it would continue on and off for nearly two decades.

Verdi’s lifelong preoccupation with Shakespeare would take concrete form for the first time a few years down the road when, again enlisting (and bullying) Piave, he composed *Macbeth*, widely recognized as a major turning point in his early career. But the work of Victor Hugo likewise helped Verdi find his voice both times he brought it to the opera stage, in *Ernani* and *Rigoletto*—even if George Bernard Shaw mischievously overstated the case, quipping that “the chief glory of Victor Hugo as a stage poet was to have provided libretti for Verdi.”

In fact, Hugo’s work “as a stage poet” (including the controversial, quasi-Shavian prefaces he published to accompany his plays) did have an enormous impact not just on the theater of the era but on the artistic worldview of Romanticism. The five-act *Hernani* brought to the stage the Shakespeare-flavored Romantic aesthetic advocated by Hugo to replace the artificial unities and order of Classicism. Its mix of raw emotion and revolutionary politics famously triggered a riot when the play opened in Paris in 1830.

Verdi wasn’t the first to sense *Hernani*’s suitability for opera. An operatic treatment had already appeared in Paris as early as 1834. Bellini seriously considered the idea but was dissuaded on account of difficulty with the censors, opting for *La Sonnambula* instead. (Verdi and Piave got away with having to make remarkably few and minor concessions to the Venetian censors.) Yet what long ago seemed so revolutionary about the play’s scenario of hotheaded, youthful passion clashing fatally with antiquated codes of honor has become, to contemporary audiences, absurdly overwrought melodrama. And the Risorgimento-tinged political factors understood in Verdi’s day—the main plot, after all, shows an old, irrelevant order (represented by Silva) destroying the legitimate happiness of a young couple seeking to be united—no longer resonate.

Still, the streamlined version of *Hernani* that captivated Verdi provided an ideal vehicle through which to explore a new sense of dramatic momentum—all while still working within the general framework of conventional opera, with its entrance arias, cabalettas, and ensemble finales. Even in the opening scene (the most conventional part of the opera, which introduces material not found in Hugo), Verdi conveys a brash energy that is the thumbprint of the score overall and that anticipates the dark urgency of *Il Trovatore*. The driving, syncopated rhythms that characterize the lovers Ernani and Elvira in their first-act trio with Don Carlo represent this urgency’s clearest expression, but the sheer abundance of melodic ideas throughout also points to the opera’s fundamentally dynamic

nature. This lyrical overflow serves as a kind of shortcut to alter the mood as rapidly as needed.

At the same time, Verdi artfully links separate units into longer spans so that musical forms convincingly mirror the dramatic progression. The confrontation between Silva (the old generation) and the lovers in the second act, for example, enfolds the opera's only love duet within a larger trio. Nowhere is Verdi's large-scale design and dramatic efficiency more effective than in the masterful compression of the third act. Here we start with the gloomy low-woodwind tone painting of the prelude and the solitary communing of Don Carlo but arrive at a luminous ensemble conclusion; along the way, Verdi's music has tracked the conversion of roué king to magnanimous ruler. This sudden opening into an epic sphere makes the return to the drama of private vendettas, which clinches the final act, feel all the more claustrophobic.

Most remarkable of all is how clearly Verdi translates the drama into operatic terms. Many a commentator has wryly noted that *Ernani's* basic conflict could also be described as a battle among vocal ranges, with tenor, baritone, and bass vying for the soprano, though it is an instrument—with cruel irony, a horn—that is the victor. (Thanks to the composer's say in choosing his singers, he was able to veto an original plan that would have cast the hero as a breeches role for alto.)

But behind the humorous formula lies a significant insight about Verdi's use of voice archetypes to establish character. Julian Budden, whose analyses remain an inexhaustible source of insight into the composer's oeuvre, writes that *Ernani* "is built out of the clash" of male vocal archetypes. Between two extremes—a kind of lyrical heroism embodied by the tenor versus the immovable, archaic, "monochrome" force of the bass, Silva—stands the baritone, Don Carlo, "partaking of both natures." It is the Verdi baritone who will become "the greatest vehicle of power in Italian opera"—and indeed we glimpse future snatches of such complex figures as King Philip and Simon Boccanegra in Verdi's music for Don Carlo, the only character in *Ernani* who actually changes.

Verdi lived a pattern of distracting illnesses and intense mood swings, both of which accompanied the composition of *Ernani*. He even threatened to "blow [his] brains out" at one point if the premiere failed with the picky Venetian audience. Despite a mediocre first night, however, *Ernani* was recognized at once as a success and spread the composer's fame internationally. This was Verdi's second opera to be staged in the United States, reaching New York as early as 1847. It ranks just after *Macbeth* in number of performances by the Metropolitan Opera to date. —Thomas May

The Cast



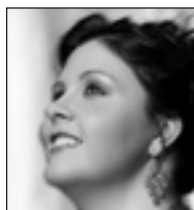
Marco Armiliato

CONDUCTOR (GENOA, ITALY)

THIS SEASON *Anna Bolena*, *Ernani*, *Aida*, *Il Barbiere di Siviglia*, and *Madama Butterfly* at the Met, *Tosca* in Munich, *L'Elisir d'Amore* and *L'Italiana in Algeri* with the Vienna State Opera, *Linda di Chamounix* in Barcelona, *Manon Lescaut* in Hamburg, and *Il Barbiere di Siviglia* with the Paris Opera.

MET APPEARANCES More than 200 performances, including *La Bohème* (debut, 1998), *Tosca*, *Lucia di Lammermoor*, *La Rondine*, *Adriana Lecouvreur*, *La Traviata*, *La Fille du Régiment*, *Il Trovatore*, *Rigoletto*, *Turandot*, *Cavalleria Rusticana*, *Pagliacci*, *Andrea Chénier*, *Sly*, and *Cyrano de Bergerac*.

CAREER HIGHLIGHTS Since his 1995 debut at the Vienna State Opera he has returned to that company for a number of works, including *Tosca*, *Fedora*, *Turandot*, *Madama Butterfly*, *Rigoletto*, and *La Sonnambula*. He also conducts regularly at the Deutsche Oper Berlin, San Francisco Opera, Barcelona's Liceu, Rome Opera, the Hamburg State Opera, and Venice's La Fenice, among others.



Angela Meade

SOPRANO (CENTRALIA, WASHINGTON)

THIS SEASON The title role of *Anna Bolena* and Elvira in *Ernani* at the Met, Lucrezia in a concert performance of Verdi's *I Due Foscari* for her debut with the Deutsche Oper Berlin, and her Canadian debut with Montreal's Orchestre Métropolitain.

MET APPEARANCES Elvira (debut, 2008) and the Countess in *Le Nozze di Figaro*.

CAREER HIGHLIGHTS Recent performances include the title role of *Norma* in concert at the Tanglewood Festival; Mahler's Symphony No. 2 with the Seattle Symphony; her European operatic debut at the Wexford Festival in Mercadante's *Virginia*; debuts with the Pittsburgh Symphony, Houston Symphony, and Palm Beach Symphony in the Verdi Requiem; and Donna Anna in a concert version of *Don Giovanni* with the St. Paul Chamber Orchestra. She has also sung Elisabetta in *Roberto Devereux* at the Dallas Opera, *Anna Bolena* and the title role of *Lucia di Lammermoor* at Philadelphia's Academy of Vocal Arts, and the title role of *Semiramide* at the Caramoor Festival. She was a winner of the 2007 Metropolitan Opera National Council Auditions and appeared in *The Audition*, the documentary film about that competition. Recipient of the Met's 2012 Beverly Sills Award, established by Agnes Varis and Karl Leichtman.



Ferruccio Furlanetto

BASS (SACILE, ITALY)

THIS SEASON Méphistophélès in *Faust*, de Silva in *Ernani*, and Don Basilio in *Il Barbiere di Siviglia* at the Met, Fiesco in *Simon Boccanegra* with the Vienna State Opera, de Silva in Bologna, and the title roles of *Attila* with the San Francisco Opera and *Boris Godunov* with the Vienna State Opera, Lyric Opera of Chicago, and in Palermo.

MET APPEARANCES Philip II in *Don Carlo*, Fiesco, Mustafà in *L'Italiana in Algeri*, Leporello and Don Giovanni in *Don Giovanni*, the Grand Inquisitor in *Don Carlo* (debut, 1980), Figaro in *Le Nozze di Figaro*, Colline in *La Bohème*, Procida in *I Vespri Siciliani*, Alvise in *La Gioconda*, Count des Grieux in *Manon*, Sparafucile in *Rigoletto*, and Cardinal Brogni in *La Juive*.

CAREER HIGHLIGHTS Recent performances include Padre Guardiano in *La Forza del Destino*, Fiesco, Philip II, and Mustafà in Vienna; Boito's Mefistofele in Palermo; Philip II at Covent Garden, La Scala, and Paris's Bastille Opera; the title role of Massenet's *Don Quichotte* in St. Petersburg; and *Boris Godunov* in St. Petersburg, Rome, Florence, and Milan.



Marcello Giordani

TENOR (AUGUSTA, ITALY)

THIS SEASON The title role of *Ernani*, Pinkerton in *Madama Butterfly*, and Radamès in *Aida* at the Met, Cavaradossi in *Tosca* at the Deutsche Oper Berlin and Vienna State Opera, Manrico in *Il Trovatore* and Don José in *Carmen* in Catania, Don José in Oman, Radamès with Lyric Opera of Chicago, and Turiddu in *Cavalleria Rusticana* at the Paris Opera.

MET APPEARANCES Dick Johnson in *La Fanciulla del West*, Calàf in *Turandot*, Gabriele Adorno in *Simon Boccanegra*, Cavaradossi, Faust in *La Damnation de Faust*, Edgardo in *Lucia di Lammermoor*, Roméo, des Grieux in *Manon Lescaut* and *Manon*, Benvenuto Cellini, Rodolfo in *La Bohème* (debut, 1995), Alfredo in *La Traviata*, Lenski in *Eugene Onegin*, Gualtiero in *Il Pirata*, Gustavo in *Un Ballo in Maschera*, and Enzo in *La Gioconda*.

CAREER HIGHLIGHTS The Sicilian tenor has sung in all the world's leading theaters. Among his recent performances are Maurizio in *Adriana Lecouvreur* in Rome, Vasco da Gama in Meyerbeer's *L'Africaine* with Opera Orchestra of New York, Canio in *Pagliacci* and Turiddu in Barcelona, and Cavaradossi in Munich, London, and Madrid.



Dmitri Hvorostovsky

BARITONE (KRASNOYARSK, RUSSIA)

THIS SEASON Don Carlo in *Ernani* and Germont in *La Traviata* at the Met, Valentin in *Faust* at Covent Garden, and the title role of *Simon Boccanegra* at the Vienna State Opera.

MET APPEARANCES Simon Boccanegra, Count di Luna in *Il Trovatore*, Anckarström in *Un Ballo in Maschera*, Yeletsky in *The Queen of Spades* (debut, 1995), Valentin, Belcore in *L'Elisir d'Amore*, Prince Andrei in *War and Peace*, Don Giovanni, and Eugene Onegin.

CAREER HIGHLIGHTS He appears regularly at major opera houses throughout the world, including Covent Garden, Munich's Bavarian State Opera, La Scala, the Vienna State Opera, Buenos Aires's Teatro Colón, Lyric Opera of Chicago, and the Mariinsky Theatre. Among his most notable roles are Eugene Onegin, Don Giovanni, Rodrigo in *Don Carlo*, Germont, Rigoletto, Anckarström, and Francesco in *I Masnadieri*. He has also been heard in concert with the New York Philharmonic, San Francisco Symphony Orchestra, and Rotterdam Philharmonic, among many others.

What's on Stage

This February, rising soprano Angela Meade returns to the role of her Met debut, Elvira in *Ernani*, opposite Marcello Giordani, Dmitri Hvorostovsky, and Ferruccio Furlanetto. Bartlett Sher's production of *Il Barbiere di Siviglia* returns with Diana Damrau, Colin Lee, and Rodion Pogossov in the principal roles. Stephanie Blythe sings Amneris in *Aida* for the first time at the Met alongside Violeta Urmana in the title role and Marcelo Álvarez as Radamès.

Verdi

ERNANI

FEB 2, 6, 10, 14, 18 eve, 25 mat

Rossini

IL BARBIERE DI SIVIGLIA

FEB 4 eve, 8, 11 eve, 15, 18 mat

Verdi

AIDA

FEB 9, 13, 16, 20, 23, 28 MAR 3 mat

DISCOVER THE BENEFITS OF MEMBERSHIP!

Enjoy dress rehearsals, our member lounge, shop discounts and more. Membership starts at just \$75. Get a free gift when you join today at the Membership Desk on the Grand Tier.

Visit metopera.org for full casting information and ticket availability.

LIVE BROADCASTS

FEBRUARY

Thursday, Feb 2 7:30pm
Verdi: *Ernani*

Saturday, Feb 4 12:00pm
Donizetti: *Anna Bolena*

Tuesday, Feb 7 6:00pm
Wagner: *Götterdämmerung*

Thursday, Feb 9 7:30pm
Verdi: *Aida*

Saturday, Feb 11 12:00pm
Wagner: *Götterdämmerung*

Tuesday, Feb 14 7:30pm
Verdi: *Ernani*

Wednesday, Feb 15 7:30pm
Rossini: *Il Barbiere di Siviglia*

Saturday, Feb 18 1:00pm
Rossini: *Il Barbiere di Siviglia*

Wednesday, Feb 22 7:30pm
Puccini: *Madama Butterfly*

Thursday, Feb 23 7:30pm
Verdi: *Aida*

Saturday, Feb 25 1:00pm
Verdi: *Ernani*

Monday, Feb 27 7:00pm
Mussorgsky: *Khovanshchina*

Wednesday, Feb 29 7:30pm
Mozart: *Don Giovanni*

Metropolitan Opera Radio on SiriusXM Channel 74

The definitive radio
channel for opera lovers

Enjoy live broadcasts from the Met stage plus gems from the Met's rich 81-year radio broadcast history—commercial-free, 24 hours a day, seven days a week. For more information, visit metopera.org.

SiriusXM
SATELLITE RADIO