

RICHARD WAGNER

TANNHÄUSER

CONDUCTOR
James Levine

PRODUCTION
Otto Schenk

SET DESIGNER
Günther
Schneider-Siemssen

COSTUME DESIGNER
Patricia Zipprodt

LIGHTING DESIGNER
Gil Wechsler

CHOREOGRAPHER
Norbert Vesak

STAGE DIRECTOR
Stephen Pickover

GENERAL MANAGER
Peter Gelb

MUSIC DIRECTOR
James Levine

PRINCIPAL CONDUCTOR
Fabio Luisi

Opera in three acts

Thursday, October 15, 2015
7:00–11:20PM

The production of *Tannhäuser* was
made possible by a generous gift from
The Fan Fox and Leslie R. Samuels Foundation,
and the **Metropolitan Opera Guild**

The revival of this production is made
possible by a gift of Ambassador and
Mrs. Nicholas F. Taubman

The Metropolitan Opera

2015–16 SEASON

The 474th Metropolitan Opera performance of

RICHARD WAGNER'S

TANNHÄUSER

CONDUCTOR
James Levine

IN ORDER OF VOCAL APPEARANCE

VENUS
Michelle DeYoung*

REINMAR VON ZWETER
Ricardo Lugo

TANNHÄUSER
Johan Botha

ELISABETH
Eva-Maria Westbroek

A YOUNG SHEPHERD
Ying Fang **

PAGES
Daniel Katzman
Connor Tsui

HERMANN, LANDGRAF
OF THURINGIA
Günther Groissböck

Michael Graham
Gabriel Nichols
Ruby Gilmore
Emma Kramer

WALTHER VON DER VOGELWEIDE
Noah Baetge

Andre Gulick
Brandon Harnett

BITEROLF
Ryan McKinny

THREE GRACES
Marybeth Hansohn
Ana Luiza Luizi
Sarah Weber Gallo

WOLFRAM VON ESCHENBACH
Peter Mattei

HEINRICH DER SCHREIBER
Adam Klein

Thursday, October 15, 2015, 7:00–11:20PM



Eva-Maria Westbroek
as Elisabeth and
Johan Botha as
Tannhäuser

Chorus Master **Donald Palumbo**
Musical Preparation **John Keenan, Robert Morrison,
Carol Isaac, Bryan Wagorn, and Nimrod David Pfeffer**
Assistant Stage Directors **Phebe Berkowitz and
Peter McClintock**
Stage Band Conductor **Gregory Buchalter**
German Coach **Marianne Barrett**
Prompter **Carol Isaac**
Met Titles **Christopher Bergen**
Children's Chorus Director **Anthony Piccolo**
Scenery, properties, and electrical props constructed
and painted in **Metropolitan Opera Shops**
Costumes executed by **Metropolitan Opera
Costume Department**
Wigs and Makeup executed by **Metropolitan Opera Wig
and Makeup Department**
Headdresses and jewelry by **Janet Harper**

This performance is made possible in part by public funds
from the New York State Council on the Arts.

Before the performance begins, please switch off cell phones
and other electronic devices.

* Graduate of the
Lindemann Young Artist
Development Program

** Member of the
Lindemann Young Artist
Development Program

Yamaha is the
Official Piano of the
Metropolitan Opera.

Latecomers will not be
admitted during the
performance.

Met Titles

To activate, press the red button to the right of the screen in front of
your seat and follow the instructions provided. To turn off the display,
press the red button once again. If you have questions please ask an
usher at intermission.

Visit metopera.org



The Metropolitan Opera 2015-16

NEW PRODUCTIONS

OTELLO • LULU • LES PÊCHEURS DE PERLES (The Pearl Fishers)
MANON LESCAUT • ROBERTO DEVEREUX • ELEKTRA

REPERTORY

TURANDOT • IL TROVATORE • ANNA BOLENA • TANNHÄUSER
TOSCA • RIGOLETTO • LA BOHÈME • DIE FLEDERMAUS
LA DONNA DEL LAGO • THE BARBER OF SEVILLE
CAVALLERIA RUSTICANA / PAGLIACCI • MARIA STUARDA
MADAMA BUTTERFLY • LE NOZZE DI FIGARO
DON PASQUALE • L'ELISIR D'AMORE • SIMON BOCCANEGRA
DIE ENTFÜHRUNG AUS DEM SERAIL (The Abduction from the Seraglio)

Aleksandrs Antonenko as Otello

PHOTO: KRISTIAN SCHULLER/METROPOLITAN OPERA

metopera.org 212.362.6000

Synopsis

Act I

SCENE 1 The Venusberg

SCENE 2 A valley near the Wartburg

Intermission (AT APPROXIMATELY 8:15 PM)

Act II

Hall of the minstrels in the Wartburg

Intermission (AT APPROXIMATELY 9:50 PM)

Act III

A valley near the Wartburg

Act I

The minstrel Tannhäuser, having spent a year in the magical underground realm of Venus, the goddess of love, longs to return to the human world. He pays tribute to Venus in a song but ends by asking her to let him go. Surprised, Venus promises him even greater pleasures, but when he insists and repeats his pleas, she furiously dismisses him and curses his desire for salvation. Tannhäuser cries out that his hope rests with the Virgin Mary—and suddenly finds himself transported to a valley near the castle of the Wartburg.

A procession of pilgrims passes on the way to Rome. Tannhäuser is deeply moved and praises the wonders of God, as horns announce the arrival of a hunting party. It is Landgraf Hermann with his knights. Recognizing Tannhäuser as their long-lost friend, they beg him to return to the castle with them, but Tannhäuser is reluctant. Wolfram, one of the knights, reminds him that his singing once won him the love of Elisabeth, the Landgraf's niece. On hearing her name, Tannhäuser understands what he must do and joins his companions.

Act II

Elisabeth joyfully greets the Wartburg's Hall of Song, which she hasn't set foot in since Tannhäuser left. He is now led in by Wolfram. Elisabeth, at first shy and confused, tells Tannhäuser how she has suffered in his absence, but then joins him in praise of love.

Landgraf Hermann is delighted to find his niece in the Hall of Song, and together they welcome their guests who have come for a song contest. The Landgraf declares that it is about "love" and promises the victor to receive whatever he asks from the hand of Elisabeth. Wolfram opens the contest with a heartfelt

tribute to idealized love. Tannhäuser, his thoughts still on Venus, replies with a hymn to worldly pleasures. Other singers counter his increasingly passionate declarations until Tannhäuser breaks out into his prize song to Venus, to the horror of the guests. As the men are about to draw their swords, Elisabeth intervenes herself between the parties to protect Tannhäuser and begs the knights for mercy. The Landgraf pronounces his judgment: Tannhäuser will be forgiven if he joins the pilgrims on their way to Rome to do penance. Tannhäuser rushes from the hall.

Act III

Several months later, Wolfram comes across Elisabeth praying at a shrine in the valley. A band of pilgrims, back from Rome, passes by, but Tannhäuser is not among them. Broken with grief, Elisabeth prays to the Virgin Mary to receive her soul into heaven. Wolfram gazes after her and asks the evening star to guide her way. Night falls, and a solitary pilgrim approaches. It is Tannhäuser, ragged and weary. He tells Wolfram of his devout penitence on the way to Rome—of his joy at seeing so many others pardoned, and of his despair when the Pope proclaimed that he could no more be forgiven for his sins than the papal staff bear green leaves again. Left without hope, all he wants now is to return to Venus. He summons her and she appears, just as Wolfram once again brings Tannhäuser to his senses by invoking Elisabeth's name. At this moment, Elisabeth's funeral procession comes winding down the valley. With a cry, Venus disappears. Tannhäuser implores Elisabeth to pray for him in heaven and collapses dead. As dawn breaks, another group of pilgrims arrives, telling of a miracle: the Pope's staff, which they bear with them, has blossomed.

Richard Wagner

Tannhäuser

*Premiere: Court Opera, Dresden, 1845 (original version);
Opéra, Paris, 1861 (revised version)*

After the premiere of *Der Fliegende Holländer* in 1843, Wagner turned for inspiration to German medieval and Renaissance literature, a realm that would eventually provide the sources for all of his remaining works. (His final opera, *Parsifal*, in fact is based on a romance by the medieval poet Wolfram von Eschenbach, who appears as a major character in *Tannhäuser*.) History, legend, and invention are combined in *Tannhäuser*—as in all of Wagner's operas—to create a unique and powerful drama. The historical title character was a 13th-century Minnesänger, the German equivalent of a troubadour or minstrel, who wrote erotic love poetry but also a notable poem of penance. The legend that grew around him provides the framework of the opera's story. Wagner changed little but allows the hero to die and be redeemed at the end. He also added the character of the saintly Elisabeth, the object of Tannhäuser's true affection, as a mirror image of Venus. She is based on the historical Saint Elisabeth of Hungary, wife of Louis IV, Landgraf of Thuringia. Wagner revised the score several times, most importantly when he added the ballet after the overture and greatly expanded the following first scene for the 1861 Paris premiere (which, for political reasons, ended in one of the legendary fiascos in theater history). The opera's rarely used full title is *Tannhäuser und der Sängerkrieg auf Wartburg* ("Tannhäuser and the Song Contest on Wartburg Castle").

The Creator

Richard Wagner (1813–1883) was the complex, controversial creator of music-drama masterpieces that stand at the center of today's operatic repertory. Born in Leipzig, Germany, he was an artistic revolutionary who reimagined every supposition about music and theater. Wagner insisted that words and music were equals in his works. This approach led to the idea of the Gesamtkunstwerk, or "total work of art," combining music, poetry, architecture, painting, and other disciplines, a notion that has had an impact on creative fields far beyond opera.

The Setting

Tannhäuser takes place in and around Wartburg Castle, near the town of Eisenach in central Germany, and in the mythical grotto of Venus, the goddess of love. Wartburg was the setting of a—possibly legendary—13th-century song contest as well as the home of Saint Elisabeth of Hungary (1207–1231). Three hundred years later it would become associated with Martin Luther, who translated the New Testament from Greek into German there. The pagan-Christian dichotomy expressed in the twofold setting is central to the opera's dramatic core.

Stream Hundreds of Met Performances on Your Favorite Devices

Anna Netrebko in
Tchaikovsky's *Iolanta*

New Apps for Android™, Roku®, and Samsung Smart TV Available Now!

Met Opera on Demand delivers instant and unlimited online access to more than 550 full-length Met performances—including more than 85 stunning high-definition presentations from the award-winning *Live in HD* series, along with classic telecasts and radio broadcasts spanning from 1935 to 2015.



Experience these extraordinary Met performances on your TV, tablet, smartphone, or computer. Download the new apps—as well as the highly rated iPad® app—for free, and visit the Met website to subscribe or sign up for a free 7-day trial.

metoperaondemand.org



Roku  **SMART TV**

Photo: Marty Sohl/Metropolitan Opera
Apple, the Apple logo, and iPad are trademarks of Apple Inc., registered in the U.S. and other countries. App Store is a service mark of Apple Inc. Android is trademark of Google Inc. ROKU is a registered trademark of Roku, Inc. in the United States and other countries.

The Music

Much of the score of *Tannhäuser* belongs to the tradition of Romantic opera that Wagner developed and transcended over subsequent decades in his mature music dramas. Together with *Lohengrin* (1850), it forms the pathway to a new operatic aesthetic that would be fully expressed for the first time in *Das Rheingold* (completed in 1854 but not performed until 1869), the initial chapter of the *Ring* cycle. In *Tannhäuser*, Wagner's masterful command of the orchestra is immediately apparent in the famous overture and the exciting ballet music that follows—a continuous 20-minute flood of sound that perfectly captures in instrumental terms the conflict of body and spirit that is the central issue of the opera. The full range of dramatic vocalism is expressed in solos ranging from the soprano's rousing salute to the Hall of Song, "Dich, teure Halle," to her ardent prayer in Act III and, in an unforgettable passage of delicate beauty, the baritone's invocation to the evening star, "O, du mein holder Abendstern." The score evokes the art of the medieval bards with *Tannhäuser's* harp-accompanied odes to Venus in Act I and in the scene of the song contest in Act II. The title character's dramatic Rome Narrative in Act III abandons conventional melodic phrases in favor of a speech-based structure that directly points towards Wagner's later works and remains striking in its modernity.

Met History

Tannhäuser was first seen at the Met in 1884, as the opening night production of the company's second season. The performance also marked the first time an opera was performed in German at the Met (*Wagner's Lohengrin* had been given in Italian the previous season). Leopold Damrosch conducted the original Dresden version. In 1889 the Met presented the U.S. premiere of the Paris version, conducted by Anton Seidl, who had worked with Wagner at the inaugural Bayreuth Festival in 1876. Some of the legendary singers to appear in early stagings through the 1940s include Nellie Melba, Emma Eames, Johanna Gadski, Emmy Destinn, Geraldine Farrar, Maria Jeritzka, Kirsten Flagstad, Helen Traubel, and Astrid Varnay (Elisabeth), Olive Fremstad (Venus and a few performances as Elisabeth), Leo Slezak (*Tannhäuser*), Lawrence Tibbett (Wolfram), and, most notably, Lauritz Melchior, who sang 70 performances of the title role between 1926 and 1948. A new production in 1953, directed by Herbert Graf and conducted by George Szell, featured Ramón Vinay, Margaret Harshaw, George London, and Varnay as Venus. The 1960 run saw the company debuts of conductor Georg Solti and Hermann Prey as Wolfram, and in 1966 Birgit Nilsson sang both Elisabeth and Venus in four performances. James Levine led the premiere of the current Otto Schenk production in 1977, with James McCracken, Leonie Rysanek, Bernd Weikl (in his Met debut), Grace Bumbry, and Kathleen Battle (in her Met debut as the Shepherd). Other notable appearances in this production have included Jess Thomas, Richard Cassilly, and Peter Seiffert in the title role, Eva Marton, Jessye Norman, and Deborah Voigt as Elisabeth, Tatiana Troyanos as Venus, and Håkan Hagegård, Bryn Terfel, and Thomas Hampson as Wolfram.

Program Note

Wagner never completely came to terms with *Tannhäuser*. On the evening of January 22, 1883, less than a month before his death, he ended a conversation with his wife Cosima by playing the Shepherd's Song and Pilgrims' Chorus on the piano. In her diary entry for that day, Cosima quotes her husband lamenting that, "he still owed the world a *Tannhäuser*."

Even if Wagner was merely referring to a production suitable for Bayreuth (where the opera would be posthumously introduced under Cosima's direction in 1891), he remained anxious long after *Tannhäuser's* premiere in 1845 about how to improve what he had created. This anxiety bordered on obsession: *Tannhäuser* stands alone among the canonical Wagner operas as a continual "work-in-progress" over which the composer restlessly fretted, rethinking its premises on the occasion of each new production and periodically subjecting it to revision.

The so-called Dresden and Paris versions—named, respectively, after the world premiere in 1845 and the dramatic overhaul for the Paris Opéra in 1861—have become convenient tags for a rather more extensive and ongoing revision process. This process certainly did not end following the Paris production, which proved to be one of the spectacular fiascos of opera history: the audience's riotous misbehavior led to an abrupt withdrawal of the opera after only three performances. It's also remarkable that, over the years, the voluble Wagner published more advice regarding specific performance instructions for *Tannhäuser* than for the *Ring* or his other stage works.

Why would Wagner expend so much effort on a creation that is still, in its essence, a "Romantic opera"? This seems especially strange since we're used to imagining the composer's early works as way stations on the path toward his real goal of the mature music dramas.

Wagner himself helped foster this biased view through the constant retrospective spin he put on his achievements. Yet musically and dramatically, *Tannhäuser* represents the critical link between the conventional opera world and the radical new artistic possibilities he was beginning to imagine for the medium. This is even more the case with the Paris version, for which he flavored Venus's scenes with the revolutionary harmonic language and erotically languishing colors of the recently composed *Tristan und Isolde*. If, as Wagner put it, he took "a gigantic step forward in the direction of my ideal" in *Tannhäuser*, both the old and the new coexist in this opera, generating a fascinating tension—just as the polarized realms of erotic and spiritual love that are conjured by strikingly contrasting sound worlds to drive the drama.

Tannhäuser's traditional set pieces—Elisabeth's two arias, Wolfram's popular hymn, the entrance march of the guests, the thrilling ensemble finales to the first two acts—show how thoroughly Wagner had mastered the reigning "blockbuster" style of opera he would come to vehemently reject, while the hero's confrontations with Venus in the first act are a microcosm of the old–new dynamic. *Tannhäuser's* ode, which conveys his desire to return to the "normal"

world, could hardly sound more conventional, even banal, yet from Venus it elicits wildly amorphous responses. This is a score that also encompasses one of Wagner's most frightening depictions of psychological breakdown in the title hero's soul-baring Rome Narrative in the final act.

One reason for the special position *Tannhäuser* held among Wagner's works during his lifetime is the circulation it gained following the lukewarm reception of the 1845 Dresden premiere. The first Wagner opera to be produced in the United States, *Tannhäuser* for decades embodied the countercultural challenges of the fearsome specter of "Wagnerism": a guilty pleasure that allowed audiences to indulge in the decadence of the Venusberg while secure in the knowledge of the hero's ultimate redemption.

Another explanation for the opera's significance involves the chronology of its creation. *Tannhäuser* is the inaugural opera Wagner wrote—music and libretto, as was already his custom—after being appointed assistant Kapellmeister at the King of Saxony's court in Dresden in early 1843. *Rienzi*, Wagner's first work modeled after the state-of-the-art grand opera being produced in Paris, had elevated his standing with its triumphant premiere at the Dresden Court Opera in 1842, a few months before his 30th birthday. In the shorter *Der Fliegende Holländer*, unveiled at Dresden in January 1843, Wagner had already shown he was no longer content to pursue *Rienzi's* relatively conventional path. And by virtue of his new job he now had regular access to a first-rate orchestra with which to experiment with unusual sonorities. It's no accident that *Tannhäuser* marks the true emergence of Wagner as an orchestral wizard. Several of the score's most effective moments are the instrumental landscapes Wagner creates to chart the progress of his hero—from the intoxicating, oversaturated allure of the Venusberg to the pastoral balm of the great transformation in the first act to the tormented inner pilgrimage that is the crux of the final act.

In creating the opera's story, Wagner, in typical fashion, enhanced his inspiration by boldly combining strands from entirely different and even unrelated sources. The predicament the protagonist faces when we first encounter *Tannhäuser*—and the primary motivation for the opera's events—derives from a didactic late-medieval ballad. The ballad describes a kind of failed pilgrim's progress that ends with the miraculous story of the Pope's "dry and dead staff" sprouting leaves—though too late, for in this version of the story *Tannhäuser* has already returned to the realm of Venus in his despair. Wagner fused this cautionary tale with an earlier, entirely separate event involving a contest of medieval minstrels (known in German as *Minnesänger*, those who sing about love)—the basis for his opera's second act.

The lore of this legendary contest, said to have taken place around 1206 at the court of Count Hermann I at the Wartburg Castle in Thuringia, in the heart of Germany, had resurfaced along with the *Tannhäuser* ballad as part of the Romantic rediscovery of the Middle Ages, inspiring such authors as E.T.A. Hoffmann, whose *Battle of the Bards* (1818) Wagner knew. Both strands are

included in the opera's full title: "Tannhäuser and the Song Contest on Wartburg Castle." The order of the items hints at Wagner's decision to subordinate the song contest to the story of Tannhäuser's quest for redemption, which provides the frame for it.

Yet another source, only vaguely alluded to by Wagner, was the body of tales surrounding the figure of Saint Elisabeth (1207–1231). She was a Hungarian princess who arrived at the Wartburg court through marriage and, after she was widowed, devoted herself to a life of extreme poverty along the lines of the recent Saint Francis of Assisi. Saint Elisabeth attracted several 19th-century composers (Franz Liszt devoted an entire oratorio to her), and Wagner once again freely mingles references to her cult with his fictional heroine.

The resulting character is the most complex in the entire opera: despite her limited appearances, Elisabeth undergoes a process of transformation that arguably outstrips even that of Tannhäuser. Far more than a simple icon of "pure" love, she embodies contradictions of her own that mirror the conflicts tormenting the hero. She is initially presented as almost feverish with desire for her beloved and for the art he brings with him—so different from the routine fare at the Wartburg—and she vigorously defends Tannhäuser after his catastrophic performance in the contest. By the scene of her great prayer in the third act, the now-saintly Elisabeth has been portrayed with charisma sufficient to act as a persuasively dramatic counterweight to Venus.

As it does with elements of old-fashioned opera and a nascent sense of the music drama to come, *Tannhäuser* blends the historical with the mythic in a highly curious way. In this as well, Wagner sensed the opera's significance in pointing him toward the path he should take. His characters amalgamate traits from actual historical figures such as Saint Elisabeth, the Thuringian Landgraf Hermann I, and the Minnesänger, even including the epic poet Wolfram von Eschenbach, whose *Parzival* would serve as the source for Wagner's final opera. Tannhäuser, incidentally, is always addressed as "Heinrich," thus implying his identification with the fictional poet Heinrich von Ofterdingen, who stirs up the wrath of his fellow Minnesänger in the legend of the song contest.

Finally, the Wartburg itself acquires the status of a character. For his German audiences in particular, Wagner knew that the mere name of the castle came loaded with centuries of powerful historical associations for national identity: along with the tradition of the Minnesänger and their song contest, the Wartburg was the site where Martin Luther once took refuge to work on his translation of the Bible (and where legend holds he threw a pot of ink in anger when the devil tried to tempt him).

Tannhäuser reimagines these historical and quasi-historical starting points to distill a timelessly valid myth of humanity's struggle to integrate competing drives—a myth certainly of no less relevance today, no matter how differently we label these drives.

—Thomas May

The Cast



James Levine

MUSIC DIRECTOR AND CONDUCTOR (CINCINNATI, OHIO)

MET HISTORY Since his 1971 company debut leading *Tosca*, he has conducted more than 2,500 performances at the Met—more than any other conductor in the company's history. Of the 85 operas he has led at the Met, 13 were company premieres (including *Stiffelio*, *I Lombardi*, *I Vespri Siciliani*, *La Cenerentola*, *Benvenuto Cellini*, *Porgy and Bess*, *Erwartung*, *Moses und Aron*, *Idomeneo*, and *La Clemenza di Tito*). He also led the world premieres of Corigliano's *The Ghosts of Versailles* and Harbison's *The Great Gatsby*.

THIS SEASON In his 45th season at the Met he conducts revivals of *Tannhäuser* (which will be transmitted live in HD), *Die Entführung aus dem Serail*, *Die Fledermaus*, and *Simon Boccanegra*; all three concerts of the Met Orchestra's annual subscription series at Carnegie Hall with soloists Renée Fleming, Christine Goerke, Johan Botha, and Evgeny Kissin; and two concerts by the Met Chamber Ensemble at Carnegie's Zankel and Weill Halls. In February, he returns to the Philadelphia Orchestra for the first time in 20 years.



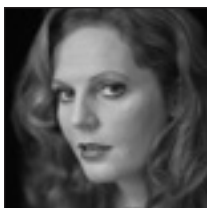
Michelle DeYoung

MEZZO-SOPRANO (GRAND RAPIDS, MICHIGAN)

THIS SEASON Venus in *Tannhäuser* at the Met, appearances with the Israel Philharmonic Orchestra in Carnegie Hall, Dallas Symphony Orchestra in Dallas and on tour in Europe, and the Hong Kong Philharmonic.

MET APPEARANCES Brangäne in *Tristan und Isolde*, Shaman in the world premiere of Tan Dun's *The First Emperor*, Dido in *Les Troyens*, Fricka in *Das Rheingold* and *Die Walküre*, and the German Mother in Britten's *Death in Venice* (debut, 1994).

CAREER HIGHLIGHTS Fricka with the Los Angeles Opera; Sieglinde in *Die Walküre*, Waltraute in *Götterdämmerung*, and Brangäne with Lyric Opera of Chicago; Brangäne at La Scala, Berlin State Opera, and the Seattle Opera; Venus with Houston Grand Opera; Kundry in *Parsifal* at the Bayreuth Festival; Marguerite in *La Damnation de Faust* with the Paris Opera; and Jocasta in Stravinsky's *Oedipus Rex* and Gertrude in Thomas's *Hamlet* at Paris's Châtelet. She is a graduate of the Met's Lindemann Young Artist Development Program.



Eva-Maria Westbroek

SOPRANO (THE HAGUE, THE NETHERLANDS)

THIS SEASON Elisabeth in *Tannhäuser* at the Met, Santuzza in *Cavalleria Rusticana* at Covent Garden, the title role of *La Wally* in Monte Carlo, Isolde in *Tristan und Isolde* and Sieglinde in *Die Walküre* in Baden-Baden, Minnie in *La Fanciulla del West* at La Scala, and the title role of *Tosca* for her debut at Buenos Aires's Teatro Colón.

MET APPEARANCES Sieglinde (debut, 2011), the title role of *Francesca da Rimini*, Katerina Ismailova in *Lady Macbeth of Mtsensk*, and Santuzza.

CAREER HIGHLIGHTS Minnie in *La Fanciulla del West* at Covent Garden, the Netherlands Opera, and in Frankfurt; Sieglinde at Covent Garden, San Francisco Opera, Deutsche Oper Berlin, Aix-en-Provence Festival, and the Bayreuth Festival; and Katerina Ismailova at Covent Garden, the Paris Opera, Netherlands Opera, and in Madrid; the title role in the world premiere of Turnage's *Anne Nicole* at Covent Garden where she has also sung Dido in *Les Troyens*, the title role of *Manon Lescaut* in Baden-Baden and Brussels; the title role of *Kát'a Kabanová* at the Berlin State Opera, Leonora in *La Forza del Destino* in Vienna and Brussels, the title role of *Jenůfa* in Stuttgart and Munich, the Empress in *Die Frau ohne Schatten*, and Madame Lidione in *Dialogues des Carmélites*, and Elisabeth in Paris.



Johan Botha

TENOR (RUSTENBURG, SOUTH AFRICA)

THIS SEASON The title role of *Tannhäuser* at the Met, Siegmund in *Die Walküre* in Dresden, the title role of *Otello* at the Salzburg Easter Festival, and Calàf in *Turandot* at the Vienna State Opera and Munich's Bavarian State Opera.

MET APPEARANCES Walther in *Die Meistersinger von Nürnberg*, Radamès in *Aida*, Siegmund, Canio in *Pagliacci* (debut, 1997), Florestan in *Fidelio*, Calàf, and the title roles of *Otello*, *Don Carlo*, and *Lohengrin*.

CAREER HIGHLIGHTS Among his recent performances are Bacchus in *Ariadne auf Naxos* and the title role of *Parsifal* at the Vienna State Opera, *Tannhäuser* at Lyric Opera of Chicago, and Siegmund at the Bayreuth Festival. He has also sung *Otello* and the Emperor in *Die Frau ohne Schatten* in Munich, Walther at Lyric Opera of Chicago, and *Parsifal* at the Salzburg Easter Festival. Additional performances include Pollione in *Norma* in Berlin, Apollo in Strauss's *Daphne* and the title role of *Andrea Chénier* at the Vienna State Opera, and the Emperor at Covent Garden and La Scala. He has also been heard at Barcelona's Liceu, San Francisco Opera, Los Angeles Opera, and Paris's Bastille Opera and Théâtre du Châtelet.



Günther Groissböck

BASS (Waidhofen, Austria)

THIS SEASON Lodovico in *Otello* and Landgraf Hermann in *Tannhäuser* at the Met, Zaccaria in *Nabucco* at the Deutsche Oper Berlin, Ochs in *Der Rosenkavalier* at La Scala, Pogner in *Die Meistersinger von Nürnberg* at the Paris Opera, and King Henry in *Lohengrin* and Ochs at Munich's Bavarian State Opera.

MET APPEARANCES Banquo in *Macbeth* and Colline in *La Bohème* (debut, 2010).

CAREER HIGHLIGHTS In recent seasons he has sung Baron Ochs at the Salzburg Festival, Fasolt in *Das Rheingold* and Landgraf Hermann at the Bayreuth Festival, Fafner in *Das Rheingold* and Hunding in *Die Walküre* at Paris's Bastille Opera, the title role of *Boris Godunov* and Landgraf Hermann at Madrid's Teatro Real, Sarastro in *Die Zauberflöte* at Lyric Opera of Chicago, King Henry and Fafner at the Vienna State Opera, and numerous roles at the Bavarian State Opera, including Gremin in *Eugene Onegin*, Vodnik in *Rusalka*, Orest in *Elektra*, and Hunding. He has also sung Sarastro at La Scala, Deutsche Oper Berlin, Salzburg Festival, Aix-en-Provence Festival, and in Los Angeles, Sparafucile in *Rigoletto* in Zurich, Landgraf Hermann in Barcelona, Fafner in San Francisco, Colline with Washington National Opera, and King Henry in Houston.



Peter Mattei

BARITONE (Piteå, Sweden)

THIS SEASON Wolfram in *Tannhäuser* at the Met, Amfortas in *Parsifal* at the Royal Swedish Opera, Mahler's *Songs of a Wayfarer* in Madrid, Brahms's Requiem in Amsterdam, and Mendelssohn's Elijah in Vienna.

MET APPEARANCES The title roles of *Don Giovanni* and *Eugene Onegin*, Amfortas, Figaro in *Il Barbiere di Siviglia*, Marcello in *La Bohème*, Yeletsky in *The Queen of Spades*, Shishkov in *From the House of the Dead*, and Count Almaviva in *Le Nozze di Figaro* (debut, 2002).

CAREER HIGHLIGHTS Recent performances include Don Fernando in *Fidelio* at La Scala, and Eugene Onegin at the Vienna State Opera. He has also sung Don Giovanni and Shishkov at La Scala, Wolfram at the Staatsoper Berlin and La Scala, and the title role of *Billy Budd* in Frankfurt and with Sweden's Göteborg Opera. Additional performances include Don Giovanni at the Vienna State Opera, La Scala, Paris Opera, and Staatsoper Berlin, Count Almaviva at Covent Garden and the San Francisco Opera, Eugene Onegin at the Salzburg and Tanglewood Festivals, and Guglielmo in *Così fan tutte* with the Royal Swedish Opera.

Facilities and Services

THE ARNOLD AND MARIE SCHWARTZ GALLERY MET

Art gallery located in the South Lobby featuring leading artists. Open Monday through Friday, 6pm through last intermission; Saturday, noon through last intermission of evening performances.



ASSISTIVE LISTENING SYSTEM AND BINOCULARS

Wireless headsets, which work with the FM assistive listening system to amplify sound, are available at the coat check station on the South Concourse Level before performances. Binoculars are also available for rental at the coat check station on the South Concourse level. The rental cost is \$5. A major credit card or driver's license is required as a deposit.



BLIND AND VISUALLY IMPAIRED

Large print programs are available free of charge from the ushers. Braille synopses of many operas are available free of charge. Please contact an usher. Tickets for no-view score desk seats may be purchased by calling the Met Opera Guild at 212-769-7028.



BOX OFFICE

Monday–Saturday, 10am–8pm; Sunday, noon–6pm. The Box Office closes at 8pm on non-performance evenings or on evenings with no intermission. Box Office Information: 212-362-6000.

CHECK ROOM

On Concourse level (Founders Hall).

FIRST AID

Doctor in attendance during performances; contact an usher for assistance.

LECTURE SERIES

Opera-related courses, pre-performance lectures, master classes, and more are held throughout the performance season at the Opera Learning Center. For tickets and information, call 212-769-7028.

LOST AND FOUND

Security office at Stage Door. Monday–Friday, 2pm–4pm; 212-799-3100, ext. 2499.

MET OPERA SHOP

The Met Opera Shop is adjacent to the North Box Office, 212-580-4090. Open Monday–Saturday, 10am–final intermission; Sunday, noon–6pm.



PUBLIC TELEPHONES

Telephones with volume controls and TTY Public Telephone located in Founders Hall on the Concourse level.

RESTAURANT AND REFRESHMENT FACILITIES

The Grand Tier Restaurant features creative contemporary American cuisine, and the Revlon Bar offers panini, crostini, and a full service bar. Both are open two hours prior to the Met Opera curtain time to any Lincoln Center ticket holder for pre-curtain dining. Pre-ordered intermission dining is also available for Met ticket holders. For reservations call 212-799-3400.



RESTROOMS

Wheelchair-accessible restrooms are on the Dress Circle, Grand Tier, Parterre, and Founders Hall levels.

SEAT CUSHIONS

Available in the South Check Room. Major credit card or driver's license required for deposit.

SCHOOL PARTNERSHIPS

For information contact the Met Opera Guild Education Department, 212-769-7022.

SCORE-DESK TICKET PROGRAM

Tickets for score desk seats in the Family Circle boxes may be purchased by calling the Met Opera Guild at 212-769-7028. These no-view seats provide an affordable way for students to study an opera's score during a performance.

TOUR GUIDE SERVICE

Backstage tours of the Opera House are held during the Met season on most weekdays at 3:15pm, and on select Sundays at 10:30am and/or 1:30pm. For tickets and information, call 212-769-7028. Tours of Lincoln Center daily; call 212-875-5351 for availability.

WEBSITE

www.metopera.org



WHEELCHAIR ACCOMMODATIONS

Telephone 212-799-3100, ext. 2204. Wheelchair entrance at Concourse level.

The exits indicated by a red light and the sign nearest the seat you occupy are the shortest routes to the street. In the event of fire or other emergency, please do not run—walk to that exit.

In compliance with New York City Department of Health regulations, smoking is prohibited in all areas of this theater.

Patrons are reminded that in deference to the performing artists and the seated audience, those who leave the auditorium during the performance will not be readmitted while the performance is in progress.

The photographing or sound recording of any performance, or the possession of any device for such photographing or sound recording inside this theater, without the written permission of the management, is prohibited by law. Offenders may be ejected and liable for damages and other lawful remedies.

Use of cellular telephones and electronic devices for any purpose, including email and texting, is prohibited in the auditorium at all times. Be sure to turn off all devices before entering the auditorium.